

# For Sale

**\$125,900.00**

## 2024 PALM HARBOR

15 x 50 , 690 Sq Foot (without porch)

2 Bed, 1 Bath

Free 1st Month Lot Rent

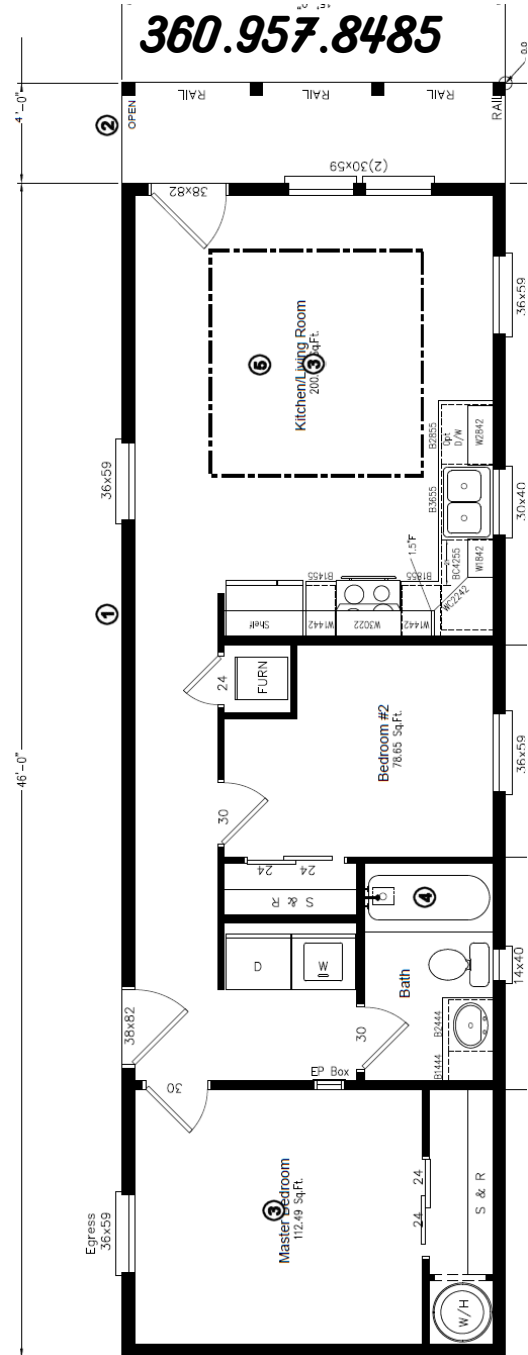
**\$1,380 in Credits given to buyer.**

This home is a beauty. Spacious Bedrooms and Living. Kitchen has a open concept.

### Check out some of the options:

- Trey Ceiling in Living Room,
- Can Lights,
- Ceiling Fans
- Brand New Appliance package.
- Upgraded Decor Package,
- Upgraded Carpet
- Tall Sidewalls
- Built on 4x15 covered porch
- Energy Star Insulated
- Plus many more UPGRADES to see !!!

**For Sale!**



**13401 NE 28th St #309A,**

**360.957.8485 Vancouver, WA.**

**Interested ? Call us for details !**



**Who am I? I have 25 + years of experience, I'm a licensed Realtor, with years of lot development of land for new home placement. Mfd home park owner, knowledgeable in acquisition and development of land, for a new home placement.**

**Being a virtual mfd home dealership means that I don't have a sales center and all the expenses that go along with that, so I can pass those savings on to you.**



**James R Wonser Jr, SRS, C-RETS,  
Managing Broker  
Wonser Homes Team @ Realty One  
Group Pacifica  
NW Factory Homes  
360.957.8485  
Dealer # 22000329 / #15962  
[www.iSellReal.com](http://www.iSellReal.com)  
[www.NWFactoryHomes.com](http://www.NWFactoryHomes.com)**

**Park Manager contact is Lana, 360.892.1960**

**\*Pictures and Size of homes is approx. And is to be verified by Buyer/Tenant**